

A photograph of three hikers standing on the peak of a large, light-colored rock formation. The hiker on the left wears a purple jacket, the middle one an orange jacket, and the right one a green jacket. They are all holding hands and raising them in a celebratory gesture. The background is a bright blue sky with scattered white clouds.

# RISE UP

WHEAT RIDGE MINISTRIES  
ANNUAL REPORT | 2014





## **RISE UP**

The burden of living in an imperfect world is not just a 21<sup>st</sup> century experience. Many of the Psalms include lamentations regarding the injustices and inequities experienced thousands of years ago—as well as pleas for God’s help: “Arise, Lord! Lift up your hand, O God. Do not forget the helpless.” (Psalm 10:12)

At Wheat Ridge Ministries, we know that God’s help often comes through leaders who are taking tangible steps to help their communities. We applaud those who are inspired to follow the words of Isaiah 60:1: “Arise, shine, for your light has come, and the glory of the Lord rises upon you.” Your gifts support those who choose to rise up and make a difference in the lives of others. Thank you for your generosity.



## **Our Mission**

Wheat Ridge Ministries seeds new ministries  
of health and hope  
in the name of the healing Christ.

Wheat Ridge Ministries has been seeding new start-up  
ministries for more than 60 years!



# **People Served in FY2014**

---

During Fiscal Year 2014, Wheat Ridge grantees  
**served over 56,000 people**  
through their projects!

These projects work in the United States and around the world to bring health and hope to church and non-church, young and old, needy and broken.



## **Volunteers Engaged in FY2014**

Volunteers are the lifeblood of so many nonprofit organizations. During Fiscal Year 2014,  
**over 4,300 individuals volunteered**  
their time with Wheat Ridge grantees for a total of  
**74,909 hours!**

“Each of you should use whatever gift you have received to serve others, as faithful stewards of God’s grace in its various forms.”

1 Peter 4:10







## **Grants Awarded in FY2014**

---

12 GrantsPlus Grants totaling \$409,000

9 Joshua Grants totaling \$39,375

7 WeRaise Crowdfunding Grants totaling \$27,363\*

6 Burst Grants totaling \$29,600

4 Hurricane Sandy Hope & Recovery Grants totaling \$15,000

3 Select Grants totaling \$40,730

**41 Total Grants — \$561,068**

\* WeRaise pilot year

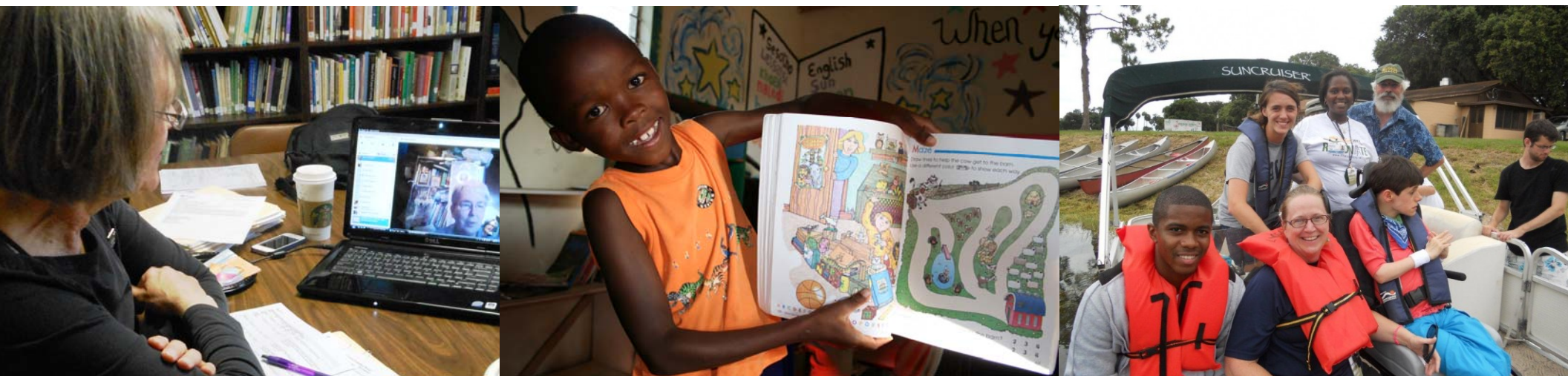
# **WeRaise Helps Leaders Rise Up**

For more than 60 years, Wheat Ridge has provided grants to new, innovative health and human care ministries while constantly evaluating techniques to increase the impact of our programs.

In 2014, Wheat Ridge launched **WeRaise.us, a Christian crowdfunding website**, to do just that. Crowdfunding is the practice of funding a project by raising many small amounts of money from a large number of people, typically via the internet.

In the FY2014 pilot year, 10 worthwhile Christian projects were posted to the site with seven meeting or exceeding their goals, including funding raised to:

- Provide a Christian summer camp retreat for families with disabilities in southeastern U.S.
- Train young leaders as they work to create a culture of peace within Chicago's toughest neighborhoods.
- Develop "mini-retreats" for caregivers facilitated by a deaconess via Skype.
- Provide critical school supplies to orphans and vulnerable children in Lesotho, Africa.







## **FY2014 Highlights**

---

Both the WeRaise crowdfunding site and traditional Wheat Ridge grants are made possible by faithful donors who rise up beyond their own financial, personal and spiritual challenges to provide enduring and impactful financial support.

A few highlights from 2014 follow.



# Rise Up to Provide a Safe Alternative

---

As part of its 2014 launch in the troubled Alton neighborhood of Chattanooga, Tennessee, Bridge City Community leaders wanted to buy a bus. After getting to know the residents for a year, they saw that young people needed safe transportation to classes and resources offered at the local community center. They named it “The Reconciliation Bus” project.

A mission plant of First Lutheran Church in Chattanooga, Bridge City used our WeRaise crowdfunding website to publicize their project and raise funds to refurbish the bus, obtain insurance, secure a year’s stipend for drivers, and establish an account for expenses. Funds raised beyond their goal went toward gas gift cards and opportunities to expand the use of the bus for mobile tutoring and hospitality events.

“First and foremost, the bus will transport youth from their homes to our meals, clinics and classes,” Pastor Josh Woodrow says. “In a neighborhood where safety is questionable due to gangs and drugs, this is a blessing to parents who no longer have to worry about their children’s journey to and from the recreation center.”



# **Rise Up from Financial Difficulty**

The mission of Metro CareRing in Denver, Colorado, is to provide services/resources for people living with financial instability, and to offer long-term solutions and avenues to achieve self-reliance. Metro CareRing developed the Assets-Based Client Care System (ABCCs), focusing on people's strengths. Approximately 170 volunteers weekly help Metro CareRing provide client care management for eligible families, tracking progress over the course of one year. They set budgets and establish personal, employment, childcare and housing goals.

Metro CareRing, in its second year of a GrantsPlus grant, has met with an average of 479 households each month. "Support from Wheat Ridge Ministries provided an opportunity for us to expand the self-sufficiency program to address hunger in a more systematic way," notes Rev. Lynne Butler, Metro CareRing Executive Director. The grant allowed Metro CareRing to enact a pilot program offering participants one-on-one support, focusing on the individual's assets and the community's broader assets to help people move forward on their path to independence.







## **Rise Up from a Life in Prison**

---

The Green Re-Entry Opportunities (GRO) program in Marion, Illinois, is a real-life representation of Alfred Austin's declaration: "To nurture a garden is to feed not just the body, but the soul." The program raises up citizens returning from incarceration, giving them skills, a sense of purpose, and hope as they plant, maintain and harvest community gardens.

An initiative of the Prisoner and Family Ministry of Lutheran Social Services of Illinois (LSSI), GRO received a Wheat Ridge GrantsPlus grant to add two more garden sites in Marion. The four-year grant will support the construction of a greenhouse and the proposed acquisition of acreage for an aquaponic farm/greenhouse – all run by returning citizens. Funds will also help GRO become a formal extension of LSSI's Employment Skills School, adding classroom learning opportunities to existing garden-site education.

And, as GRO works to reduce recidivism, hungry people are fed. GRO gardens in Herrin and Marion donate approximately 1,000 pounds of fresh organic produce each year to local food pantries and soup kitchens. GRO truly benefits both the body and soul of its community.



## **Rise Up to a Community's Needs**

---

Organized by Luther Place Memorial Church in Washington, D.C., Steinbruck Center Summer Camp features English language enrichment programs, field trips, nutritional meals and snacks, and playtime. For families with deep roots in a neighborhood suffering from the tide of gentrification, the camp was a welcome respite and helped the church achieve new relevance as a center for hospitality.

Kristen Kane-Osorto, the church's Organizer of Community Life and Justice, received a Burst Grant to establish the camp in 2013. The camp strongly impacted the congregation, 30 students and their families – and more than 400 community members during “SoulFiesta on the Block,” a celebration with free food, cultural music and community art projects. The following September, Luther Place began hosting ESL classes attended by nearly 30 summer-camp parents. January 2014 saw its first winter break day camp – and they continued the trend with a spring camp, where students could learn about Holy Week, make their own artwork and participate in daily workshops.



# **Thank You!**

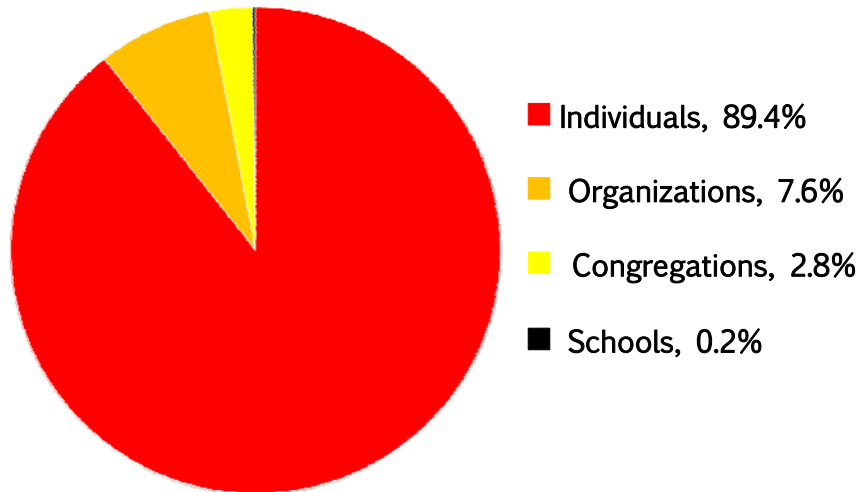
The writer of Psalm 20 reminds us that we are called to place our trust in God and serve Him.  
As we focus the mercy of the Lord who sends help, answers the calls of the distressed  
and grants support to the faithful, we rise up and work together for a better world.

Thanks to your generosity, innovative ministries like Luther Place, Metro CareRing, Bridge City and  
Green Reentry Opportunities are breaking down economic, social and cultural barriers in their communities.

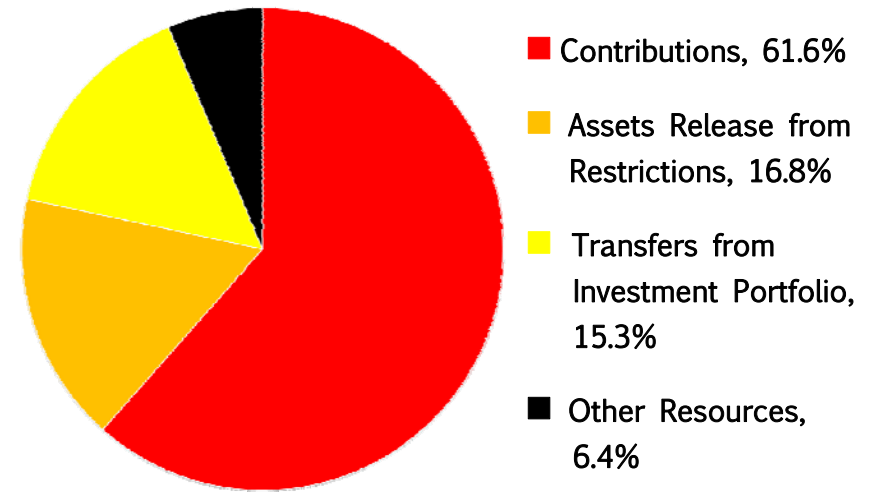
**Your support allows these ministries to rise up and stand firm in their vision.**

# FY2014 Financials

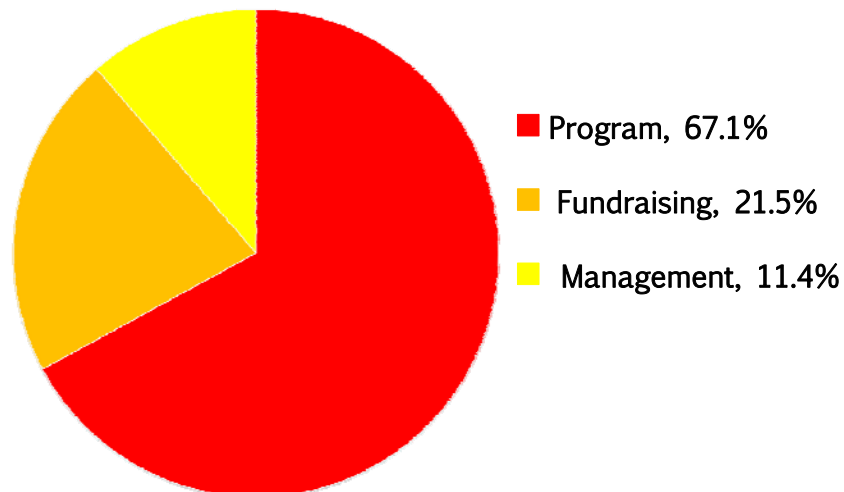
## Sources of Contributions



## Breakdown of Operating Revenues



## Breakdown of Operating Expenses



Wheat Ridge Ministries doesn't accept any government funding.  
A full copy of our audit report is available online at [www.wheatridge.org](http://www.wheatridge.org).





# **Board of Directors**

---

**Kevin Boettcher**, Director of Emerging Markets and Alliances, Vertex, Inc., Paoli, PA (Board Chair)

**Rebecca Brandt**, Development and Programs Director, A Ban Against Neglect, Durham, NC

**Anne Christiansen**, Chicago, IL

**Jon Diefenthaler**, President Emeritus, Southeastern District of The Lutheran Church – Missouri Synod, Columbia, MD

**Jay Ellwanger**, Managing Partner, DiNovo Price Ellwanger & Hardy LLP, Austin, TX

**Rae Fangmeier**, Community Volunteer, Davidson, NC

**James Handrich**, Former Lutheran Educator and Former Headmaster, Hong Kong International School, Naples, FL

**Rick Hein**, President and CEO, Miramar Bobcat, Inc., San Diego, CA

**A. William Kernen**, President, Kernen Family Investments, LLC; Co-Owner and President, Kernen Partners, LLC, Omaha, NE

**David Kretzmann**, Retired United States Naval Officer, Royal Oaks, CA

**Roderick McCallum**, Professor Emeritus of Microbial Pathogenesis and Immunology, College of Medicine, Texas A&M University Health Science Center, College Station, TX

**Wayne Miller**, Bishop, Metropolitan Chicago Synod, Evangelical Lutheran Church in America, Chicago, IL

**Sunitha Mortha**, Director for Mission Formation, Evangelical Lutheran Church in America, Chicago, IL

**Kay Siebert**, Clinic Director, Christ Church-Lutheran Christ Cares Clinic, Inc., Scottsdale, AZ

**Andrew Steele**, Manager, Donor Relations – Evangelical Lutheran Church in America, Chicago, IL; Founder, Bloom Africa, Lesotho, Africa

**Bruce Strade**, Former Executive Director, Northwest Parish Nurse Ministries, Portland, OR

**Karis Thompson**, Community Engagement Liaison, Plains Art Museum, Fargo, ND; Strategist for Community Development, Redeemer Center for Life + Redeemer Lutheran Church, Minneapolis, MN

**Anne Wenzel**, President and Executive Director, Western Colorado Community Foundation, Palisade, CO

# **Staff**

Richard Herman, President

Brian Becker, Senior Vice President

Holly Harrison Fiala, Vice President of Advancement

Rick Allmon, Special Gifts Officer

Ann Brandt, Director of Annual Giving and Advancement Services

Rebecca Davis, Website Coordinator

Anya Knodt, Assistant Director for Ministry Programs

Gail Maher, Ministry Programs Assistant

Abigail Miller, Manager of Crowdfunding and Social Media

Joanne Otte, Director of Programs

Christine Post-Duncan, National Gifts Officer

Patricia Rush, Bookkeeper

Anne Schoenherr, Director of Communications

Mark Schoepp, Director of Congregation Engagement

Jennifer Sievers, Prospect Management Associate

Melissa Struck, Director of Finance

Pam Tedesco, Assistant to the President

Catherine Werner, Constituent Management Associate



One Pierce Place, Suite 250E  
Itasca, Illinois 60143  
800.762.6748 | [wrmail@wheatridge.org](mailto:wrmail@wheatridge.org)  
[www.wheatridge.org](http://www.wheatridge.org) | [www.WeRaise.us](http://www.WeRaise.us)

